

# ColorStar<sup>®</sup> Entrance Floor Mat

## Logo Mats • Indoor

ColorStar mats feature your custom logo or artwork digitally printed on ECO-friendly PET carpet. Choose from 66 standard color options



- Yarn contains 100% post-consumer recycled content.
- Photographic Print Quality.
- Incredible stain resistance: no cross staining, easy to clean.
- Produced within 24 hours.



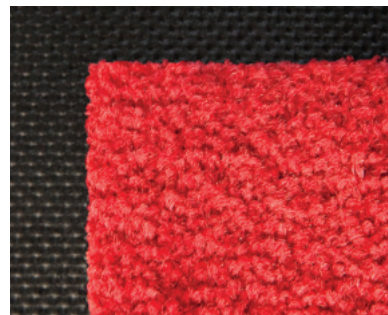
**ARTMATCH**   
OUR CUSTOMERS SELL BETTER

# ColorStar® Entrance Floor Mat

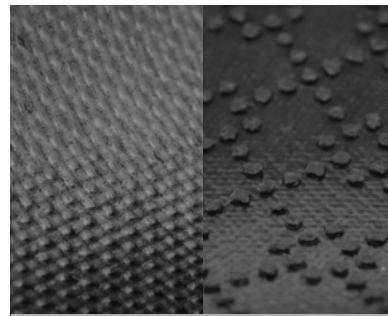
Logo Mats • Indoor



100% PET Carpet



Reinforced rubber edges



Smooth or claw backing

## Standard Sizes (cm)

60x85	115x250
75x85	115x300
85x115	150x200
85x150	150x240
85x300	150x250
115x180	150x300
115x200	200x200
115x240	200x300

Maximum size: 200 cm x 550 cm  
Size Tolerance: +/- 2%

## Specifications

**Yarn:** Continuous filament PET yarn with 100% post-consumer recycled content

**Carpet weight:** 900 g/m<sup>2</sup>

**Rubber:** Nitrile EXST™ (border 2,5mm/center 1,5mm)

**Total weight:** 2,90 kg/m<sup>2</sup>

Also available in 3mm rubber backing

Standard Sizes	Recycled bottles
60 x 85	33
75 x 85	41
85 x 115	62
85 x 150	82
85 x 300	164
115 x 180	132
115 x 200	147
115 x 240	176
115 x 250	192
115 x 300	221
150 x 200	192
150 x 240	230
150 x 250	240
150 x 300	288
200 x 200	256
200 x 300	384

C01		C34	
C02		C35	
C03		C36	
C04		C37	
C05		C38	
C06		C39	
C07		C40	
C08		C41	
C09		C42	
C10		C43	
C11		C44	
C12		C45	
C13		C46	
C14		C47	
C15		C48	
C16		C49	
C17		C50	
C18		C51	
C19		C52	
C20		C53	
C21		C54	
C22		C55	
C23		C56	
C24		C57	
C25		C58	
C26		C59	
C27		C60	
C28		C61	
C29		C62	
C30		C63	
C31		C64	
C32		C65	
C33		C66	



# Colorstar Light

## Logo Mats • Indoor

Colorstar Light mats feature your custom logo or artwork digitally printed on ECO-friendly PET carpet from 66 standard color options



- Yarn made of 100% recycled plastic bottles (P.E.T.).
- Photographic Print Quality.
- Easy to clean with vacuum cleaner or in washing machine.
- Suitable for medium to high traffic applications.

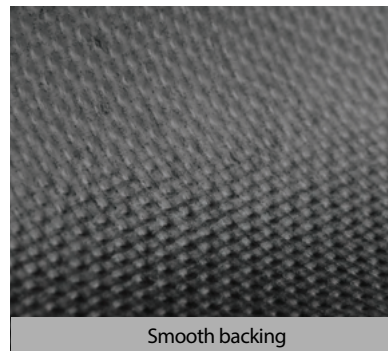


# Colorstar Light

Logo Mats • Indoor



100% PET Carpet



Smooth backing

## Standard Sizes (cm)

60x85	115x250
75x85	115x300
85x115	150x200
85x150	150x240
85x300	150x250
115x180	150x300
115x200	200x200
115x240	200x300

Maximum size: 200 cm x 550 cm  
Size Tolerance: +/- 2%

## Specifications

Yarn: **Continuous filament PET yarn with 100% post-consumer recycled content**

Carpet weight: 600 g/m<sup>2</sup>

Rubber: Nitrile EXS™ (border 1,5mm/center 1,5mm)

Total weight: 2,60 kg/m<sup>2</sup>

Standard Sizes	Recycled bottles
60 x 85	22
75 x 85	27
85 x 115	41
85 x 150	55
85 x 300	109
115 x 180	88
115 x 200	98
115 x 240	117
115 x 250	128
115 x 300	147
150 x 200	128
150 x 240	153
150 x 250	160
150 x 300	162
200 x 200	171
200 x 300	256

C01		C34	
C02		C35	
C03		C36	
C04		C37	
C05		C38	
C06		C39	
C07		C40	
C08		C41	
C09		C42	
C10		C43	
C11		C44	
C12		C45	
C13		C46	
C14		C47	
C15		C48	
C16		C49	
C17		C50	
C18		C51	
C19		C52	
C20		C53	
C21		C54	
C22		C55	
C23		C56	
C24		C57	
C25		C58	
C26		C59	
C27		C60	
C28		C61	
C29		C62	
C30		C63	
C31		C64	
C32		C65	
C33		C66	



# Promo Floor Mat

## Logo Mats • Indoor

Our Promo Floor Mats are a fantastic and functional way to promote your brand effectively. They offer stunning quality, full colour print to a low profile knitted polyester surface which is then bonded to a premium Nitrile backing.



- The perfect product for point of purchase visibility.
- Photographic HD Sublimation Print Quality.
- High Quality, knitted polyester surface.
- 100% Nitrile rubber Anti-slip Backing.



# Promo Floor Mat

Logo Mats • Indoor



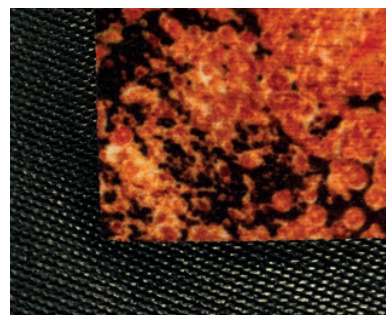
## Standard Sizes (cm)

60 x 40	85 x 150
75 x 50	85 x 300
60 x 85	115 x 180
85 x 120	150 x 300

Size Tolerance: +/- 3%



Photographic HD print quality



100% Nitrile rubber border



Anti slip backing

## Specifications

Carpet : Brush Knitted polyester F/C Printed Surface

Rubber: Nitrile Rubber

Thickness: 1,4 mm

Border width : 2 cm

Backing options: Smooth

Available with and without rubber border





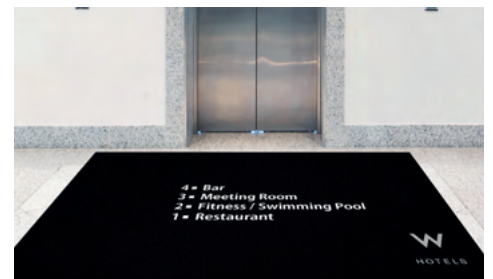
# Logoprint XL

## Logo Mats • Indoor

Thanks to our state-of-the-art printing technology, Logoprint XL mats offer sharp images and bright colors. The large size offering of the mats allows them to be used in a wide variety of locations. Customize your mats in width, length and color.



- No Art Charges or Set Up Fees.
- Artwork returned in less than 12 hours.
- Choose from 41 bright and solid Colours.
- PMS colors available.
- Available in widths up to 240 cm and 10 meter in length.
- Nitrile Rubber Backing is chemical, grease and oil resistant.



# Logoprint XL

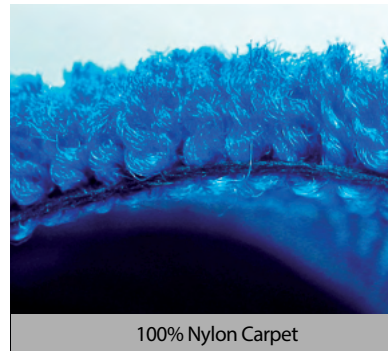
Logo Mats • Indoor



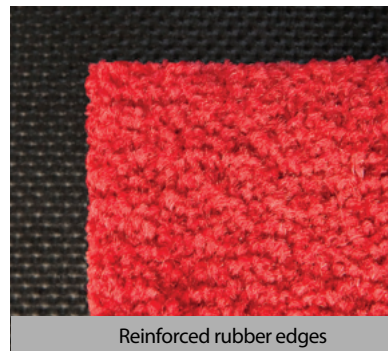
Standard Sizes (cm)

60x85	120x200
75x85	120x240
80x120	150x200
85x150	150x250
85x300	150x300
120x180	

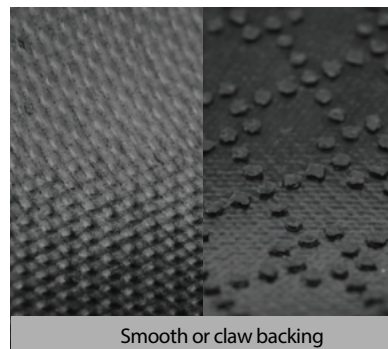
Maximum size: 240 cm x 550 cm or 200 cm x 1000 cm  
Size Tolerance: +/- 2%



100% Nylon Carpet



Reinforced rubber edges



Smooth or claw backing



## Specifications

Total height of the mat: 12 mm

Total weight of the mat: 2.8 kg/m<sup>2</sup>

Maximum water absorption: +/- 2.2 kg/m<sup>2</sup>

Use temperature: From -25 to 60°C

# Berber Impressions HD

## Logo Mats • Indoor/Outdoor

Berber Impressions mats feature your custom logo or message digitally printed on a Berber mat. They are ideal for use as slip-resistant entrance mats to showcase your custom logo or artwork, or in any area where moisture, tracking, or dripping occurs.



- **Durable** -The tight weave of Berber makes it durable enough to withstand heavy foot traffic while scraping dirt and moisture from shoes to minimize tracking.
- **High Definition** – The Berber fabric features a smooth surface that allows for crisp printing and high definition.
- **Eco-Friendly** -These mats are made with PET (polyethylene terephthalate), a type of polymer yarn that features 85% recycled content reclaimed from plastic drink bottles.
- **Easy to Clean** -PET fabric is naturally resistant to staining.
- **Attractive** -The loop pile “berber” construction features a hobnail design for an upscale appearance.
- **Safe** – Durable rubber backing helps keep the mat in place to minimize slipping hazards.
- 56 standard color options; choice of smooth or universal cleated rubber backing.
- Intended for indoor or outdoor covered use; not intended for use in direct sunlight as fading may occur.



**ARTMATCH**   
OUR CUSTOMERS SELL BETTER

# Berber Impressions HD

Logo Mats • Indoor/Outdoor



## Standard Sizes (cm)

60x85	115x300
85x115	150x240
85x150	150x300
85x300	180x300
115x180	180x360

Special size: 180cm width by 360cm length

Please note, mat size is approximate as rubber shrinks and expands in conjunction with temperature and time. Tolerable manufacturing size variance is 3-5%.



Digital printing process makes fine details, shading, and 3D images achievable.



56 Standard color options

## Specifications

### SURFACE

Fiber: PET (polyethylene terephthalate) with 85% recycled content

Weight: 1492g/m<sup>2</sup>

Total Weight: 3400 g/m<sup>2</sup>

Construction: Needle-punched

Design: Hobnail

### BACKING

Material: NBR Rubber - smooth or universal cleated

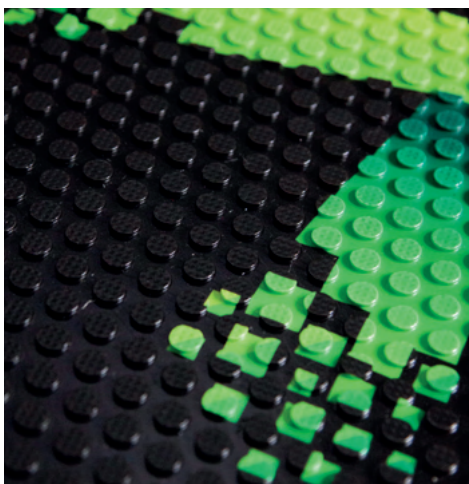
Thickness: 1,5mm with 2,5mm reinforced borders

**ARTMATCH**   
OUR CUSTOMERS SELL BETTER

# SuperScrape Impressions Plus

## Logo Mats • Indoor/Outdoor

SuperScrape Impressions mats feature your custom logo or artwork overlaid onto a SuperScrape mat. Color images are created by molding a digitally printed polymeric material into the durable nitrile surface of the mat.



- High Definition Photographic quality images are printed on thermoplastic material and molded into rubber
- Textured slip resistant surface effectively removes dirt and soil.
- 100 % Nitrile EX<sup>9</sup>Rubber is resistant to chemicals, greases and oil.
- 80 standard colour options.



# SuperScrape Impressions Plus

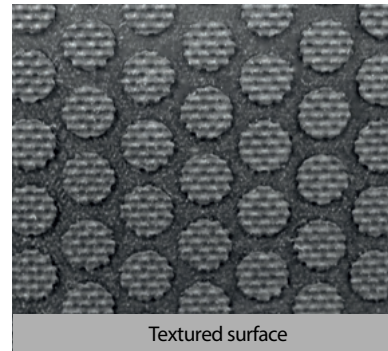
Logo Mats • Indoor/Outdoor



Standard Sizes (cm)

Mat Size:	Maximum logo size:
60x40	50x30
75x85	55x65
85x150	65x130
115x180	95x160
150x250	110x230

Size Tolerance: +/- 5%



- S1
- S2
- S3
- S4
- S5
- S6
- S7
- S8
- S9
- S10
- S11
- S12
- S13
- S14
- S15
- S16
- S17
- S18
- S19
- S20
- S21
- S22
- S23
- S24
- S25
- S26
- S27
- S28
- S29
- S30
- S31
- S32
- S33
- S34
- S35
- S36
- S37
- S38
- S39
- S40
- S41
- S42
- S43
- S44
- S45
- S46
- S47
- S48
- S49
- S50
- S51
- S52
- S53
- S54
- S55
- S56
- S57
- S58
- S59
- S60
- S61
- S62
- S63
- S64
- S65
- S66
- S67
- S68
- S69
- S70
- S71
- S72
- S73
- S74
- S75
- S76
- S77
- S78
- S79
- S80

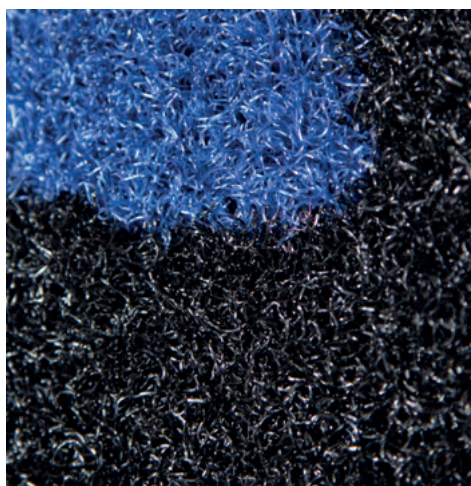
## Specifications

Rubber: 100% Nitrile EX9 Rubber  
 Total weight: 3.600 gr/m<sup>2</sup>  
 Thickness: 3 mm

# OptiBrush

## Logo Mats • Outdoor

Optibrush mats feature your custom logo or artwork on durable nylon monofibers. Combine maximum of 2 colours for the artwork.



- Durable Nylon Brush monofibers make for excellent scraping action.
- Solution Dyed fibers for 100% UV-resistance.
- Bleach and chemical resistant.
- Optional drainage holes allow for excellent drainage.



# OptiBrush

Logo Mats • Outdoor



## Standard Sizes (cm)

60x85	120x200
75x85	120x240
80x120	150x200
85x150	150x250
85x300	150x300
120x180	

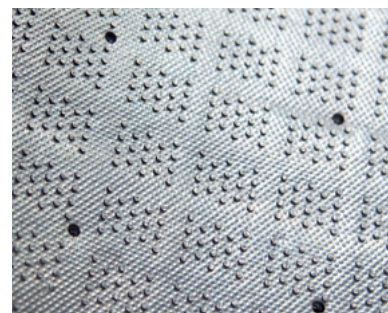
Maximum size: 200 cm x 1000 cm or 240 cm x 550 cm  
 Maximum 2 colours per design  
 Size Tolerance: +/- 2%



100% Nylon Carpet



Reinforced rubber edges

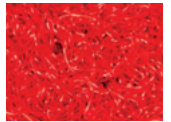


Claw backing - Drainage holes

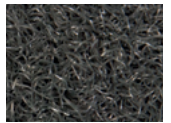
B305



B421



B312



B417



B523



## Specifications

Yarn: **Coarse continuous filament Solution Dyed Nylon**

Carpet weight: 1.300 g/m<sup>2</sup>

Rubber: 100% Nitrile EXS™ thickness 2,9mm

Total weight: 5,20 kg/m<sup>2</sup>





# Standard Bar & Counter Mat

## Logo Mats • Indoor

The hardwearing, neoprene surface of our bar mats can be fully customised with your choice of vibrant, photographic quality design. The durable 1,5 mm natural rubber backing offers protection for surfaces and has outstanding lay flat properties. Available with both curved or square corners.



- The perfect product for point of purchase visibility.
- Photographic HD Sublimation Print Quality.
- High quality printed neoprene satin polyester.
- 100% natural rubber Anti-slip Backing.



# Standard Bar & Counter Mat

Logo Mats • Indoor



Standard Sizes (mm)

415x220

435x165

600x220

825x220



Photographic HD print quality



Available in curved or squared corners



Anti slip backing

## Specifications

Carpet: Printed neoprene satin polyester

Rubber: Natural Rubber

Thickness: 1,5 mm



# Premium Bar & Counter Mat

## Logo Mats • Indoor

The hardwearing, knitted polyester surface of our bar mats can be fully customised with your choice of vibrant, photographic quality design. The durable 0.9mm Nitrile backing offers protection for surfaces and has outstanding lay flat properties. Our standard 12mm Nitrile border frames your chosen design for a classic finish.



- The perfect product for point of purchase visibility.
- Photographic HD Sublimation Print Quality.
- High Quality, knitted polyester surface.
- 100% Nitrile rubber Anti-slip Backing.



# Premium Bar & Counter Mat

Logo Mats • Indoor



## Standard Sizes (mm)

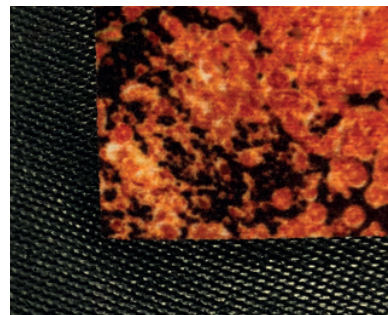
190x600

234x434

244x894



Photographic HD print quality



100% Nitrile rubber border



Anti slip backing

## Specifications

Carpet: Brush Knitted Polyester F/C Printed Surface

Rubber: Nitrile Rubber

Thickness: 1 mm

Border Width: 12 mm

Available with and without rubber border

# Counter Impressions

## Logo Mats • Indoor

The Counter Impressions is our latest innovation in premium point of sale solutions. The full colour wipeable surface is combined with a tactile and highly functional dimpled recessed design for containment of liquids.



- Lightning fast production.
- Ideal product for counter top Point of Purchase applications.
- Low minimum order quantity.
- Photographic quality logos, full bleed print area.



# Counter Impressions

Logo Mats • Indoor



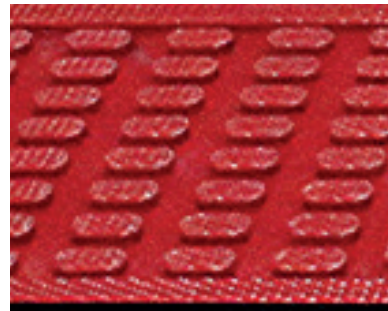
## Standard Sizes (mm)

100 x 500

200 x 550

355 x 355

Size Tolerance: +/- 2 %  
Thickness: 4 mm



Textured surface



HD print quality

## Specifications

Surface: Digitally printed Thermo-plasticity

Rubber: Nitrile (4mm)

Total Weight: 4.8 kg/m<sup>2</sup>

Backing Option: Smooth

# Mattress Foot Protector

## Logo Mats • Indoor

Our bedmats are designed for use in manufacturer or third party showrooms. Whatever the size of room we have a bedmat to suit. Also ideal for trade shows, our quality bedmats are easily rolled, distributed and transported, making your life easier while growing your brand awareness and sales figures. And all at a very fair price! Here are some of our bedmats in action.



- Anti-slip, the mat will hold its form and stay in position on the mattress.
- Standard and bespoke sizes available.
- Easily cleaned with vacuum or steam cleaner
- **Made in EU, PVC-free and EN71 certified**
- Advertise logos, pictures and your marketing message in high quality full colour, attracting customers and increasing your sales.
- Protect your mattresses from dirt and stains from footwear.
- Easily rolled up and can be changed and transported with ease.
- Distinguishes your brand from the rest.



# Mattress Foot Protector

Logo Mats • Indoor



## Standard Sizes (cm)

67 x 40

80 x 45

89 x 45

137 x 44

180 x 44

Bespoke sizes available!



Full Colour Print



Anti Slip Backing

## Specifications

Description: Smooth fabric surface with non-slip rubber base

Print Type: CMYK Sublimation

Cleaning: Vacuum, steam clean, washing machine

MOQ: 1



# Chair Mats Impressions

## Specialty Mats • Indoor

Chair Mats Impressions mats feature your custom logo or artwork digitally printed. Choose from 80 color options. M+A Chair Mats Impressions not only help protect your floor, they also add some visual interest to your office space.



- **HIGH-QUALITY PRINT** – Logos and designs are digitally printed; fine details, shading, and 3D images can be achieved
- 80 Standaard kleuropties beschikbaar
- **Glides Easily** – Your chair will glide easily over the firm but beautiful surface
- **Skid-Resistant Floor Protection** – The durable rubber backing protect your floors and keeps your mat from sliding
- **Easy to Clean** – The stain-resistant PET surface can be vacuumed and wiped clean with mild detergent
- **Designed for placement on hard floors** (will work on low-pile carpet, but not designed for anything softer)



80 Standard color options

Colors may vary due to inconsistencies of various display monitors or printers (if you're viewing a printed version of this document). Color images are intended to be used as a guide only.

# Chair Mats Impressions

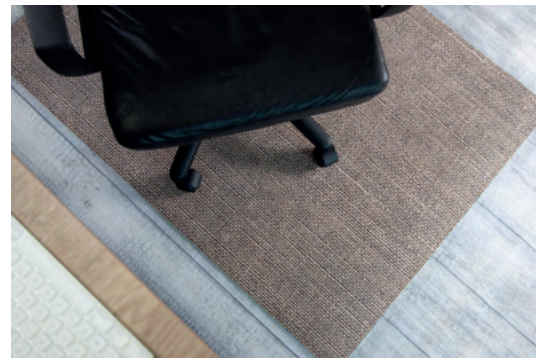
Specialty Mats • Indoor



Product No. 32765

Size: 120 x 90 cm

Note: Mat sizes are approximate as rubber shrinks and expands in conjunction with temperature and time. Tolerable manufacturing size variance is 3-5%



## Specifications

Carpet:	(Soft) Knitted Polyester upper layer
Rubber:	SBR Rubber bottom layer
Thickness:	4 mm
Weight:	3,6 kg

# Premium Office Desk Mat

## Logo Mats • Indoor

A promotional staple, our Premium Office Desk Mat offers outstanding durability for your desktop promotions. The Premium Office Desk Mat has a hardwearing fabric surface which is printed in your choice of full colour design, perfect for including useful contact information or even a handy desktop calendar!



- The perfect product for point of purchase visibility.
- Photographic HD Sublimation Print Quality.
- High Quality, knitted polyester surface.
- 100% Nitrile rubber Anti-slip Backing.



# Premium Office Desk Mat

Logo Mats • Indoor



Standard Sizes (mm)

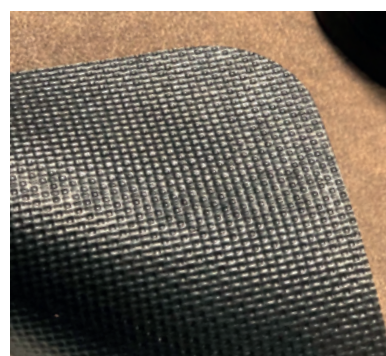
900x440

Custom sizes available

Size Tolerance: +/- 3%



HD print quality



Anti Slip Backing

## Specifications

Carpet: Brush Knitted Polyester F/C Printed Surface

Rubber: Nitrile Rubber

Thickness: 1 mm

Border Width: 12 mm

Available with and without rubber border